

UK-ADAPT

www.uk-adapt.org.uk

September 2006 Newsletter

This newsletter is the sixth of a series of monthly updates on the UK-ADAPT initiative. It is provided to all registered users on the UK-ADAPT website. Please forward to any colleagues that might be interested in UK-ADAPT and encourage them to use the website.

Overview

There has been a considerable increase in activity during September 2006 as many people have returned from their summer holidays. Twenty new projects have been added to the website since the end of August and new individuals and organisations are continuing to use the website on a daily basis.

New Projects

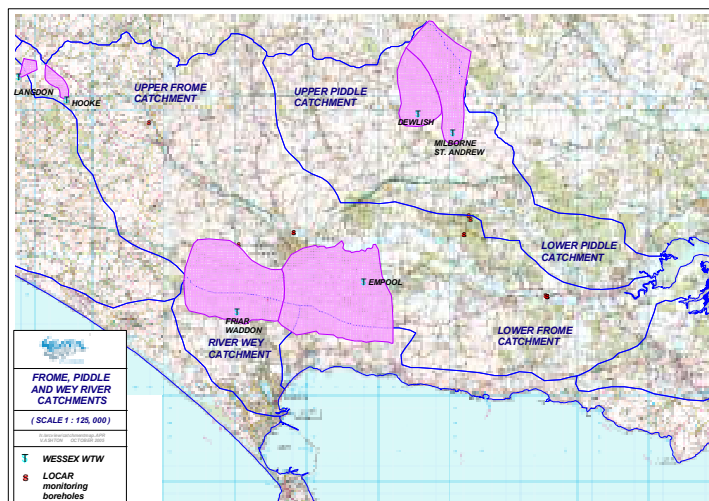
There are 174 projects currently listed on the website. We now have good coverage of projects across different UK regions, and in particular we are starting to see more projects from Northern Ireland. Please continue to review all diffuse pollution projects undertaken by your organisation since 2000 and consider registering them on UK-ADAPT. If anyone has a large number of projects to register, please contact Becky Humphrey for assistance on 01954 268267 or uk-adapt@adas.co.uk

Featured Case Study

From now on, each monthly newsletter will feature a flagship project that has recently been added to the UK-ADAPT website. This month we focus on **WAGRICO**, a new catchment project funded by the European Commission, Defra, UKWIR and Wessex Water. If you would like your project to be featured in next month's newsletter, please contact www.uk-adapt.org.uk

WAGRICO - Water resource management In co-operation with agriculture

The WAgriCo project is funded through the EC LIFE demonstration programme and runs from 2005 until 2008. It aims to develop and demonstrate approaches to integrated catchment management, i.e. identifying diffuse pollution issues, identifying potential management solutions, working with land managers/advisors to implement methods and to assess their effectiveness. It is a multi-partner project (Defra, UKWIR, NFU, Wessex Water and ADAS), working in the Frome, Piddle, and Wey catchments in Dorset (see map). German partners are replicating the work in the Lower Saxony region. For further information, visit the UK-ADAPT website. A project website is under development.



Map of the Frome, Piddle and Wey catchment area. The shaded areas denote the areas of main activity for the project

The second WAgriCo International Steering Group meeting was held in Dorchester on 20-22 September. In addition to the project team, six farmers from Lower Saxony also visited. This gave

a very practical emphasis to the meeting, especially during a tour of the catchment where several UK farmers hosted farm walks, allowing the issues of farming and the environment to be debated. A reciprocal visit is planned for next year.

UK-ADAPT Success Stories

How has UK-ADAPT helped you? Perhaps you have reviewed catchment projects in your local area and UK-ADAPT provided useful information. Maybe you have found a new organisation to collaborate with by using the 'search for a researcher' facility, or perhaps you have helped fill a gap in one of the bigger research projects by looking at information on UK-ADAPT. If you have a success story to tell, please share it with us.

Advertising on UK-ADAPT

Please remember that you can use UK-ADAPT for advertising:

- Forthcoming conferences advertised on the Notice Board
- General articles / reports in the 'Useful Documents' section
- Website Links

Feedback

If you have any comments on the website or require assistance with registering and editing projects or updating contact details, please contact us at uk-adapt@adas.co.uk